

TCS3530 EVM

Quick Start Guide

True color ambient light sensor with flicker detection

Published by **ams-OSRAM AG**

Tobelbader Strasse 30, 8141 Premstaetten, Austria

Phone +43 3136 500-0

ams-osram.com

© All rights reserved



Table of contents

1	Out of the box	3
2	Software installation	4
3	Connect hardware	6
4	Start the application.....	6
5	Uninstall application	7
6	Revision information.....	8
7	Legal information	9

1 Out of the box



For a detailed description of the TCS3530 EVM Color ALS and Flicker Detection Sensor Module Evaluation Kit, please refer to User Guide:

- UG001030

Each TCS3530 Evaluation Kit comes with the following components:

Figure 1: Evaluation kit contents



No.	Item	Description
1	TCS3530 EVM Daughter Card	PCB with TCS3530 EVM sensor installed
2	EVM Controller Board	Used to communicate USB to I ² C
3	USB Cable (A to Micro-B)	Connects EVM controller to PC
4	Flash Drive	Includes application installer and documents

2 Software installation

1. Plug the ams OSRAM flash drive into an unused USB port.
2. Double-click the Setup.exe file on the flash drive, or click Start > Run and type E:\setup.exe and press Enter. **IMPORTANT:** Use the appropriate drive letter in the above command to install the software. The flash drive will commonly be assigned the next available drive letter, for example C: hard drive, D: CD-ROM, E: flash drive.
3. The Setup Wizard will open and guide you through the installation of the TCS3530 host software (Figure 2 through Figure 8).
4. The EVM controller board requires the installation of FTDI CDM drivers. If these drivers are not installed on your machine, this setup will automatically launch the installer for the FTDI drivers.
5. At the end of the installation, click Finish to exit the setup.

Figure 2: Welcome screen

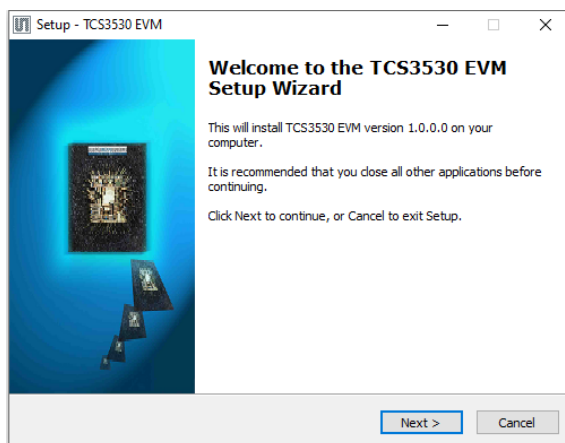


Figure 3: Liability disclaimer

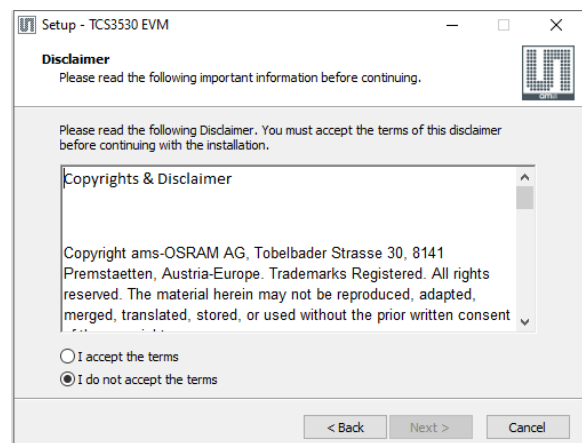


Figure 4: Select installation folder

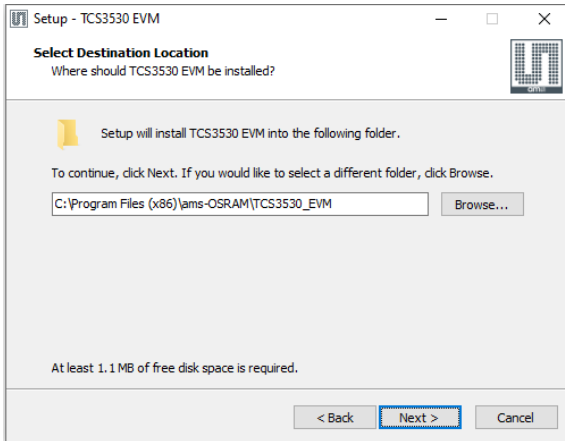


Figure 5: Select start menu folder

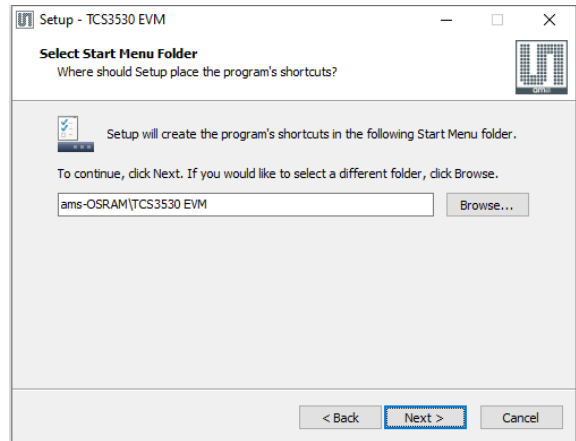


Figure 6: Installation in progress

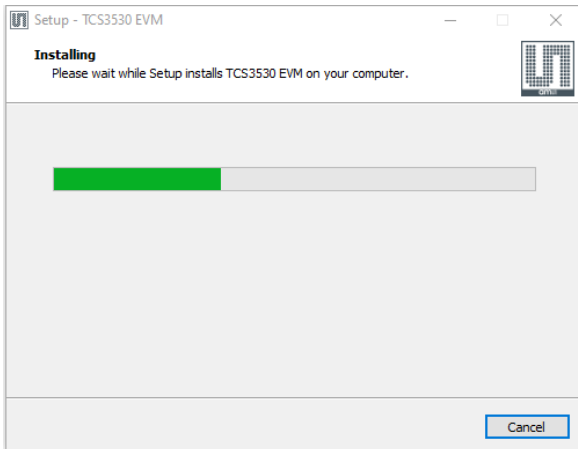


Figure 7: Information screen

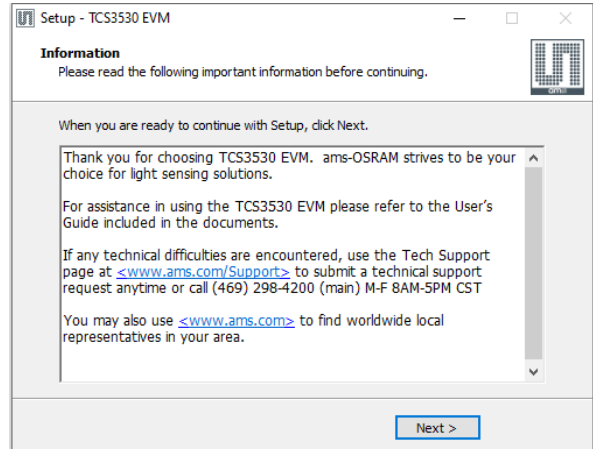
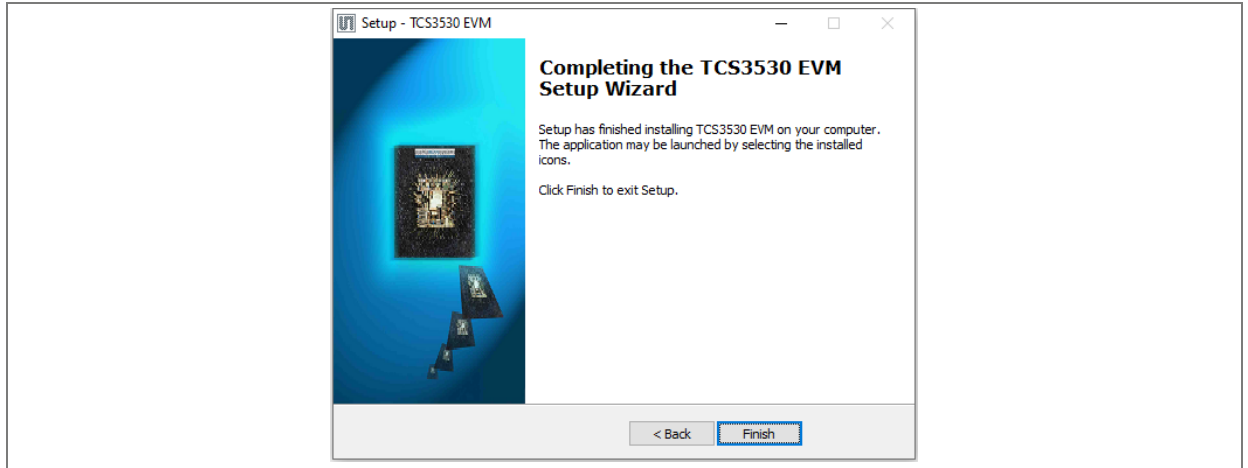


Figure 8: Installation completed successfully



3 Connect hardware

Plug the TCS3530 Daughterboard into the Controller board as in shown in Figure 1. Always use ESD procedures when handling the EVM.

Using the enclosed USB cable, plug the micro-B connector into the EVM module. Using the other end of the cable, plug the USB A-connector into a USB port on the computer.

When the USB cable is connected, the green LED should light to indicate that power is being received via the USB interface, and the controller board processor is running. If the green LED does not light, check the USB cable connections; unplug the USB cable and try again. If the green LED still does not light, check the PC for USB error messages.

4 Start the application

To start the application select `ams-OSRAM > TCS3530 EVM > TCS3530 EVM` on the All Programs menu. The default installation directory, depending on the device and the operating system you are using, is:

`C:\Program Files\ams-OSRAM\TCS3530_EVM` (Windows 32-bit operating systems)

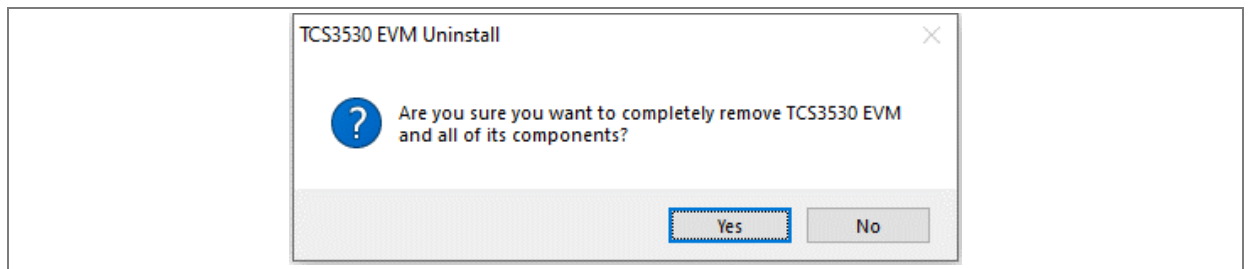
`C:\Program Files (x86)\ams-OSRAM\TCS3530_EVM` (Windows 64-bit operating systems)

A different install path may be selected by the user during the install (Figure 4). When started, the TCS3530 window will open on the PC and automatically connect to the hardware.

5 Uninstall application

To remove the software from your computer (Figure 9), select ams-OSRAM > TCS3530 EVM > Uninstall TCS3530 EVM or use the Windows Control Panel.

Figure 9: Remove installation



6 Revision information

Definitions

Draft / Preliminary:

The draft / preliminary status of a document indicates that the content is still under internal review and subject to change without notice. ams-OSRAM AG does not give any warranties as to the accuracy or completeness of information included in a draft / preliminary version of a document and shall have no liability for the consequences of use of such information.

Changes from previous released version to current revision v3-00	Page
Document contents transferred to latest ams OSRAM template	
Document security class is updated to "PUBLIC" in the footer	

- Page and figure numbers for the previous version may differ from page and figure numbers in the current revision.
- Correction of typographical errors is not explicitly mentioned.

7 Legal information

Copyright & disclaimer

Copyright ams-OSRAM AG, Tobelbader Strasse 30, 8141 Premstaetten, Austria-Europe. Trademarks Registered. All rights reserved. The material herein may not be reproduced, adapted, merged, translated, stored, or used without the prior written consent of the copyright owner.

Demo Kits, Evaluation Kits and Reference Designs are provided to recipient on an “as is” basis for demonstration and evaluation purposes only and are not considered to be finished end-products intended and fit for general consumer use, commercial applications and applications with special requirements such as but not limited to medical equipment or automotive applications. Demo Kits, Evaluation Kits and Reference Designs have not been tested for compliance with electromagnetic compatibility (EMC) standards and directives, unless otherwise specified. Demo Kits, Evaluation Kits and Reference Designs shall be used by qualified personnel only.

ams-OSRAM AG reserves the right to change functionality and price of Demo Kits, Evaluation Kits and Reference Designs at any time and without notice.

Any express or implied warranties, including, but not limited to the implied warranties of merchantability and fitness for a particular purpose are disclaimed. Any claims and demands and any direct, indirect, incidental, special, exemplary or consequential damages arising from the inadequacy of the provided Demo Kits, Evaluation Kits and Reference Designs or incurred losses of any kind (e.g. loss of use, data or profits or business interruption however caused) as a consequence of their use are excluded.

ams-OSRAM AG shall not be liable to recipient or any third party for any damages, including but not limited to personal injury, property damage, loss of profits, loss of use, interruption of business or indirect, special, incidental or consequential damages, of any kind, in connection with or arising out of the furnishing, performance or use of the technical data herein. No obligation or liability to recipient or any third party shall arise or flow out of ams-OSRAM AG rendering of technical or other services.

ams OSRAM semiconductor RoHS compliance statement

RoHS compliant: The term RoHS compliant means that ams-OSRAM AG semiconductor products fully comply with current RoHS directives. Our semiconductor products do not contain any chemicals for all 6 substance categories plus additional 4 substance categories (per amendment EU 2015/863), including the requirement that lead not exceed 0.1% by weight in homogeneous materials.

Important information: The information provided in this statement represents ams-OSRAM AG knowledge and belief as of the date that it is provided. ams-OSRAM AG bases its knowledge and belief on information provided by third parties, and makes no representation or warranty as to the accuracy of such information. Efforts are underway to better integrate information from third parties. ams-OSRAM AG has taken and continues to take reasonable steps to provide representative and accurate information but may not have conducted destructive testing or chemical analysis on incoming materials and chemicals. ams-OSRAM AG and ams-OSRAM AG suppliers consider certain information to be proprietary, and thus CAS numbers and other limited information may not be available for release.

Headquarters

ams-OSRAM AG
Tobelbader Strasse 30
8141 Premstaetten
Austria, Europe
Tel: +43 (0) 3136 500 0

Please visit our website at ams-osram.com
For information about our products go to [Products](#)
For technical support use our [Technical Support Form](#)
For feedback about this document use [Document Feedback](#)
For sales offices and branches go to [Sales Offices / Branches](#)
For distributors and sales representatives go to [Channel Partners](#)